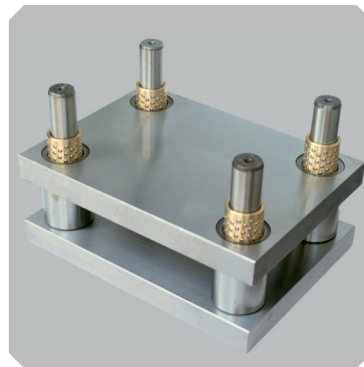
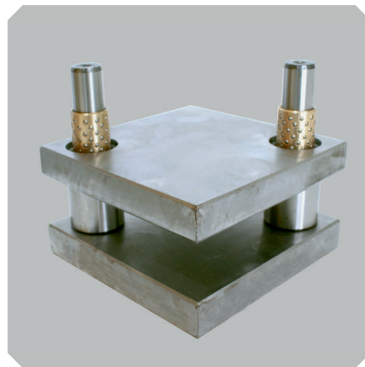


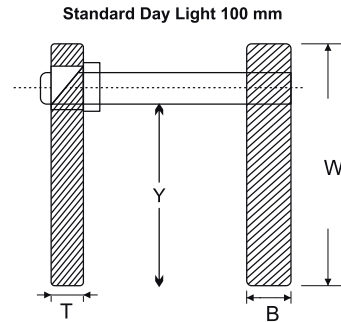
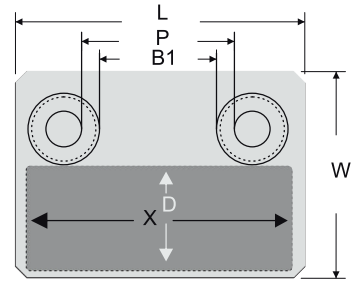
# ACCURATE ENGINEERS

In Quality  
We Trust



**From Concept to Creation,  
Exceeding Expectations**

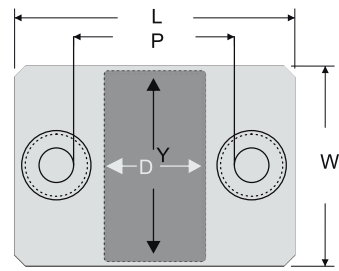
## ► BACK PILLAR DIE SET



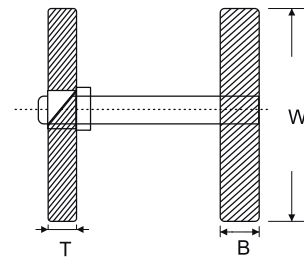
No	Code	L	W	X	D	B1	P	Y	T	B	Piller OD	Bush OD
1	A100100	100	100	50	50	14	34	67	20	22	16	36
2	A145135	145	135	80	80	49	69	97	20	25	20	40
3	A160160	160	160	100	100	64	84	122	22	25	20	40
4	A180160	180	160	130	100	68	89	114	25	30	25	46
5	A200200	200	200	130	130	88	109	134	25	30	25	46
6	A210170	210	170	150	100	98	119	124	25	30	25	46
7	A210210	210	210	150	130	76	102	156	30	35	28	54
8	A210230	210	230	150	150	76	102	176	30	35	28	54
9	A240180	240	180	180	100	106	132	126	30	35	28	54
10	A240210	240	210	180	130	106	132	156	30	35	28	54
11	A240230	240	230	180	150	106	132	176	30	35	28	54
12	A240260	240	260	180	180	106	132	206	30	35	28	54
13	A260210	260	210	200	130	126	152	156	30	35	28	54
14	A260230	260	230	200	150	126	152	176	30	35	28	54
15	A260260	260	260	200	180	126	152	206	30	35	28	54
16	A260280	260	280	200	200	124	148	224	30	35	32	56
17	A290260	290	260	230	180	154	178	204	30	35	32	56
18	A290310	290	310	230	230	154	178	254	30	35	32	56
19	A310230	310	230	250	150	174	198	174	30	35	32	56
20	A310260	310	260	250	180	174	198	204	30	35	32	56
21	A310280	310	280	250	200	174	198	224	30	35	32	56
22	A310330	310	330	250	250	174	198	274	35	40	32	56
23	A360230	360	230	300	150	224	248	174	35	40	32	56
24	A360280	360	280	300	200	224	248	224	35	40	32	56
25	A360340	360	340	300	250	208	234	277	35	40	36	62
26	A370390	370	390	300	300	218	244	327	35	40	36	62
27	A420290	420	290	350	200	268	294	227	35	40	36	62
28	A420400	420	400	350	300	265	290	335	40	45	40	65
29	A445445	445	445	350	350	290	315	380	40	45	40	65
30	A470400	470	400	400	300	315	340	335	40	45	40	65

Other size available on request

## ► CENTER PILLAR DIE SET



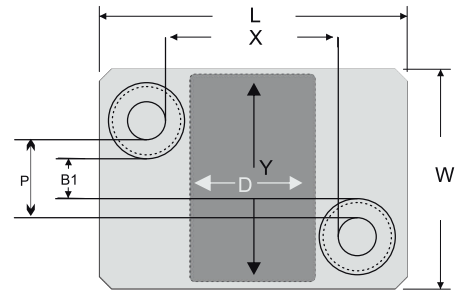
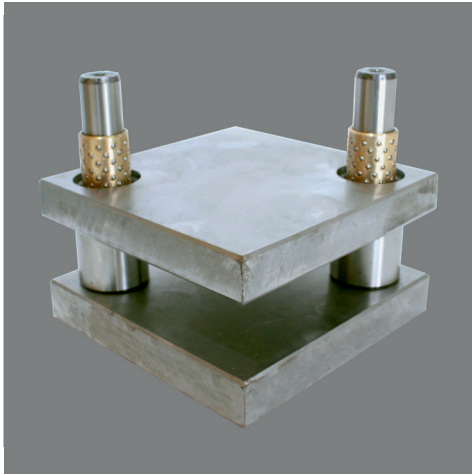
Standard Day Light 100 mm



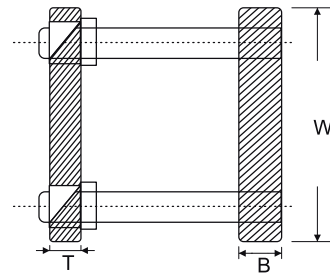
No	Code	L	W	P	D	Y	T	B	Pillar OD	Bush OD
1	B15080	150	80	74	50	50	20	25	20	40
2	B180110	180	110	104	80	80	20	25	20	40
3	B200130	200	130	124	100	100	25	30	20	40
4	B245130	245	130	154	130	100	25	30	25	46
5	B245160	245	160	154	130	130	25	30	25	46
6	B265130	265	130	174	150	100	30	35	25	46
7	B265160	265	160	174	150	130	30	35	25	46
8	B290190	290	190	182	150	150	30	35	28	54
9	B320140	320	140	212	180	100	30	35	28	54
10	B320170	320	170	212	180	130	30	35	28	54
11	B320190	320	190	212	180	150	30	35	28	54
12	B320220	320	220	212	180	180	30	35	28	54
13	B335170	335	170	227	200	130	30	35	28	54
14	B335200	335	200	227	200	150	30	35	28	54
15	B335230	335	230	227	200	180	30	35	28	54
16	B335250	335	250	227	200	200	30	35	28	54
17	B370230	370	230	258	230	180	35	40	32	56
18	B370280	370	280	258	230	230	35	40	32	56
19	B390200	390	200	282	250	150	35	40	32	56
20	B390230	390	230	282	250	180	35	40	32	56
21	B390250	390	250	278	250	200	35	40	32	56
22	B390300	390	300	278	250	250	35	40	32	56
23	B460200	460	200	334	300	150	35	40	36	62
24	B460250	460	250	334	300	200	35	40	36	62
25	B460300	460	300	334	300	250	35	40	36	62
26	B460350	460	350	334	300	300	40	45	36	62
27	B510250	510	250	384	350	200	40	45	36	62
28	B510350	510	350	384	350	300	40	45	36	62
29	B570300	570	300	440	400	250	40	45	40	65
30	B570350	570	350	440	400	300	40	45	40	65

Other size available on request

## ▶ DIAGONAL PILLAR DIE SET



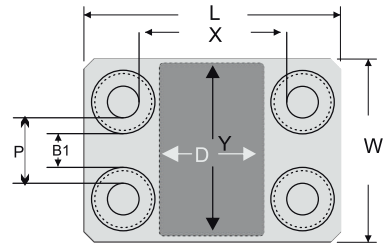
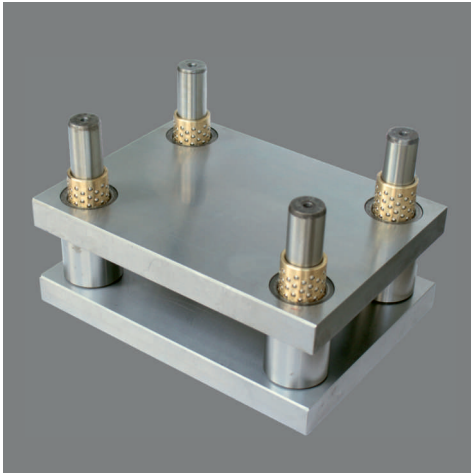
Standard Day Light 100 mm



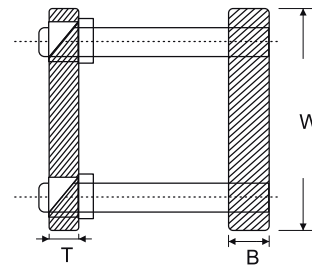
No	Code	L	W	D	Y	B1	P	X	T	B	Pillar OD	Bush OD
1	C16080	160	80	50	50	-	4	84	20	25	20	40
2	C200110	200	110	80	80	14	34	124	22	25	20	40
3	C230130	230	130	100	100	18	39	139	25	30	25	46
4	C260130	260	130	130	100	18	39	169	25	30	25	46
5	C260160	260	160	130	130	48	69	169	30	30	25	46
6	C290130	290	130	150	100	-	22	182	30	35	28	54
7	C290160	290	160	150	130	26	52	182	30	35	28	54
8	C290180	290	180	150	150	46	72	182	30	35	28	54
9	C320130	320	130	180	100	-	22	212	30	35	28	54
10	C320160	320	160	180	130	26	52	212	30	35	28	54
11	C320180	320	180	180	150	46	72	212	30	35	28	54
12	C320210	320	210	180	180	76	102	212	30	35	28	54
13	C350160	350	160	200	130	26	52	242	30	35	28	54
14	C350180	350	180	200	150	46	72	242	30	35	28	54
15	C350210	350	210	200	180	74	98	238	30	35	32	56
16	C350230	350	230	200	200	94	118	238	30	35	32	56
17	C380210	380	210	230	180	74	98	268	35	40	32	56
18	C380260	380	260	230	230	124	148	268	35	40	32	56
19	C400190	400	190	250	50	54	78	288	35	40	32	56
20	C400220	400	220	250	180	84	108	288	35	40	32	56
21	C400240	400	240	250	200	104	128	288	35	40	32	56
22	C400290	400	290	250	250	154	178	288	35	40	32	56
23	C480200	480	200	300	150	48	74	354	35	40	36	62
24	C480250	480	250	300	200	98	124	354	40	45	36	62
25	C480300	480	300	300	250	148	174	354	40	45	36	62
26	C480350	480	350	300	300	198	224	354	40	45	36	62
27	C530250	530	250	350	200	98	124	404	40	45	36	62
28	C530300	530	300	350	250	145	170	400	40	45	40	65
29	C580300	580	300	400	250	145	170	450	40	45	40	65
30	C580350	580	350	400	300	195	220	450	40	45	40	65

Other size available on request

## ► FOUR PILLAR DIE SET



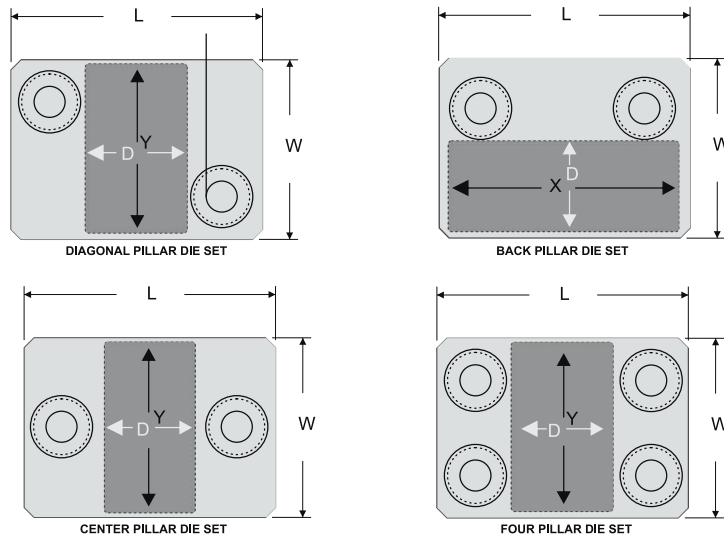
Standard Day Light 100 mm



No	Code	L	W	D	Y	B1	P	X	T	B	Pillar OD	Bush OD
1	D280180	280	180	150	150	68	89	189	25	30	25	46
2	D310160	310	160	180	130	48	69	219	25	30	25	46
3	D310210	310	210	180	180	98	119	219	25	30	25	46
4	D330180	330	180	200	150	68	89	239	30	35	25	46
5	D330230	330	230	200	200	118	139	239	30	35	25	46
6	D380220	380	220	230	180	86	112	272	30	35	28	54
7	D380270	380	270	230	230	136	162	272	30	35	28	54
8	D400190	400	190	250	150	56	82	292	30	35	28	54
9	D400240	400	240	250	200	106	132	292	35	40	28	54
10	D400290	400	290	250	250	156	182	292	35	40	28	54
11	D460240	460	240	300	200	106	132	352	35	40	28	54
12	D460300	460	300	300	250	164	188	348	35	45	32	56
13	D510250	510	250	350	200	114	138	398	35	45	32	56
14	D510350	510	350	350	300	214	238	398	35	45	32	56
15	D560250	560	250	400	200	114	138	448	35	45	32	56
16	D560300	560	300	400	250	164	188	448	35	45	32	56
17	D560350	560	350	400	300	214	238	448	35	45	32	56
18	D610250	610	250	450	200	114	138	498	35	45	32	56
19	D610300	610	300	450	250	164	188	498	35	45	32	56
20	D630350	630	350	450	300	198	224	504	40	50	36	62
21	D630400	630	400	450	350	248	274	504	40	50	36	62
22	D680300	680	300	500	250	148	174	554	40	50	36	62
23	D680350	680	350	500	300	198	224	554	40	50	36	62
24	D680400	680	400	500	350	248	274	554	40	50	36	62
25	D680450	680	450	500	400	295	320	550	45	55	40	65
26	D730350	730	350	550	300	195	220	600	45	55	40	65
27	D730450	730	450	550	400	295	320	600	45	55	40	65
28	D780350	780	350	600	300	195	220	650	45	55	40	65
29	D780350	780	350	600	400	295	320	650	45	55	40	65
30	D880450	880	450	700	400	295	320	750	50	60	40	65

Other size available on request

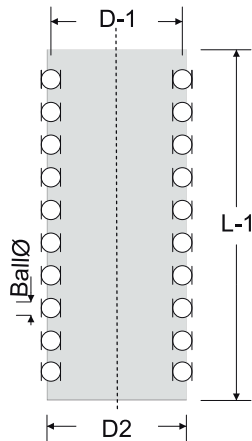
## ► STANDARD PILLAR DIE SET



No	Code	L	W	X	D	Y	INCH SIZE	T	B	Pillar OD	TYPE
1	S100100	100	100	60	52	–	04 x 04	20	22	16	BACK PILLAR
2	S150100	150	100	100	52	–	04 x 06	20	22	20	BACK PILLAR
3	S200100	200	100	150	52	–	04 x 08	25	30	20	BACK PILLAR
4	S130130	130	130	100	75	–	05 x 05	20	25	20	BACK PILLAR
5	S125150	125	150	95	100	–	05 x 06	22	25	20	BACK PILLAR
6	S150150	150	150	120	100	–	06 x 06	22	25	20	BACK PILLAR
7	S150180	150	180	120	120	–	06 x 07	25	30	25	BACK PILLAR
8	S230150	230	150	–	140	130	06 x 09	20	20	20	BLISTER CEN
9	S305150	305	150	–	170	100	06 x 12	30	35	28	CENT PILLAR
10	S180180	180	180	150	120	–	07 x 07	25	30	25	BACK PILLAR
11	S180200	180	200	150	145	–	07 x 08	25	30	25	BACK PILLAR
12	S200205	200	205	160	135	–	08 x 08	30	35	28	BACK PILLAR
13	S200230	200	230	160	160	–	08 x 09	30	35	28	BACK PILLAR
14	S205254	205	254	160	180	–	08 x 10	30	35	28	BACK PILLAR
15	S200305	200	305	–	160	170	08 x 12	30	35	32	CENT PILLAR
16	S200330	200	330	–	180	170	08 x 13	30	35	32	CENT PILLAR
17	S230230	230	230	200	160	–	09 x 09	30	35	28	BACK PILLAR
18	S230250	230	250	200	180	–	09 x 10	30	35	28	BACK PILLAR
19	S254254	254	254	200	185	–	10 x 10	30	35	28	BACK PILLAR
20	S254254	254	254	–	120	200	10 x 10	30	35	28	DIAGO. PILLAR
21	S254254	254	254	–	120	200	10 x 10	30	35	28	FOUR PILLAR
22	S254280	254	280	200	210	–	10 x 11	30	35	32	BACK PILLAR
23	S254305	254	305	200	235	–	10 x 12	30	35	32	BACK PILLAR
24	S254380	254	380	–	230	200	10 x 15	35	40	32	CENT PILLAR
25	S280280	280	280	230	210	–	11 x 11	30	35	32	BACK PILLAR
26	S305305	305	305	255	235	–	12 x 12	30	35	32	BACK PILLAR
27	S305305	305	305	–	165	255	12 x 12	30	35	32	DIAGO. PILLAR
28	S305305	305	305	–	165	255	12 x 12	30	35	28	FOUR PILLAR
29	S305330	305	330	255	260	–	12 x 13	30	35	32	BACK PILLAR
30	S330330	330	330	280	255	–	13 x 13	35	40	36	BACK PILLAR
31	S355355	355	355	300	275	–	14 x 14	35	40	36	BACK PILLAR
32	S355355	355	355	–	210	290	14 x 14	35	40	36	DIAGO. PILLAR
33	S355355	355	355	–	210	290	14 x 14	35	40	32	FOUR PILLAR

Other size available on request

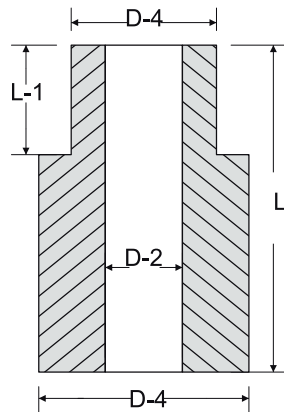
## ► BALL BEARING CAGES



**Accurate** Ball Bearings are recommended for use where Axial, Axial/Rotary & Rotary movements are required in case like Machine Tools, Press Tolls, Pillar Sets and Jigs & Fixtures.

Ball Bearing Cages Standered Bearing Al./Brass					Ball Bearing Cages Non Standered Bearing Al./Brass				
No	I.D.	O.D.	Length	Ball	No	I.D.	O.D.	Length	Ball
1	20	26	65	3	1	15	21	70	3
2	25	31	70	3	2	16	22	70	3
3	28	36	80	4	3	19	25	70	3
4	32	40	80	4	4	24	30	70	3
5	32	40	100	4	5	18	24	70	3
6	36	44	90	4	6	30	38	80	4
7	40	48	90	4	7	32	40	100	4
					8	36	44	105	4
					9	38	46	105,125	4
					10	40	48	105,125	4
					11	48	58	105,125	5
					12	50	60	105,125	5
					13	60	70	125	5

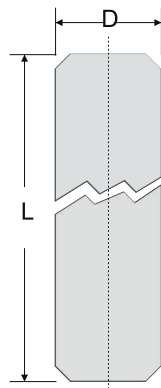
## ► SLEEVE BUSH



**Accurate** Bushes are ideally suited where longer stroke is used and longer guide length is necessary.

Sleeve Bush Standered Bush						Sleeve Bush Non Standered Bush				
No	D-2 I.D	D-3 O.D	D-4 Stop O.D	Length L-1	Length L	No	D-2 I.D	D-3 O.D	D-4 Stop O.D	Length L
1	20	36	40	20	55	1	21	32	36	60
2	25	42	46	23	65	2	22	32	36	60
3	28	50	54	28	80	3	25	36	40	70
4	32	52	56	28	80	4	30	42	46	70
5	36	58	62	30	90	5	38	50	54	80
6	40	60	65	30	90	6	46	60	65	90
7	26	36	40	20	55	7	30	44	50	110
8	31	42	46	23	65	8	25	38	42	90
9	36	50	54	28	80	9	15	32	36	60
10	40	52	56	28	80	10	16	32	36	60
11	40	56	60	30	90	11	31	42	46	110
12	44	58	62	30	90	12	36	50	54	110
13	48	60	65	30	90	13	20	36	-	75
						14	26	36	-	80
						15	33	42	46	90

## ► PILLAR PINS



**Accurate** Pillar Pins & Bushes are made from Alloy Steel and carefully heat-treated from HRC 58 to HRC 62. These are Precision ground to h4 tolerance and recommended N5 fit for bore.

Standard Pillar			Non Standard Pillar		
No	D	L-Lengths	No	D	L-Lengths
1	20	125, 150	1	15	90, 100
2	25	140, 160, 180	2	16	90, 100
3	28	180, 200	3	19	125, 150
4	30	180, 190	4	20	100, 180
5	32	150, 180, 200, 230	5	24	140, 160, 180, 200, 225
6	36	170, 200, 250	6	25	200, 250, 300
7	40	200, 250	7	28	150, 225, 250, 300
			8	30	150, 200, 225, 250
			9	32	250, 300, 350
			10	36	225, 275, 300, 350
			11	40	225, 275, 300, 350, 400
			12	50	200, 225, 255, 270, 300, 350

Other size available on request



# ACCURATE ENGINEERS



Kamlesh Panchal: +91 98797 29131  
Bhavesh Panchal: +91 95746 33447

**Address**

1 & 2, Jay Laxmi Industrial Estate, Plot No 5-B,  
Opp B.R. Engineering, Anup Engi. Road, Soni Ni Chali,  
Odhav, GIDC, Ahmedabad-382415, Gujarat, India.

**Email Id:** [accuratedieset@gmail.com](mailto:accuratedieset@gmail.com)

**Web-Site:** [www.accuratedieset.com](http://www.accuratedieset.com)